

Accessibility Content Manager (ACM)



ACM is an ImAc tool for managing the production workflow and cataloguing of access services for immersive media in a secured and controlled manner.

Main features

Access services and formats

- Centralized management and processing system for access service production workflow and access service cataloguing.
- Includes subtitles, audio description and sign language access services for the 360° media.
- Import and export of the main standard access service file formats both for classic 2D media and for 360° media.

Web interfaces

- Secure user access and based on profile permissions.
- Web based and responsive design for universal access.
- Cross-platform and cross-browser.
- Multi-language interface
- Several web interfaces for various stakeholders and profiles (System Management interface, Content Management interface, Editor interface and Publication interface).

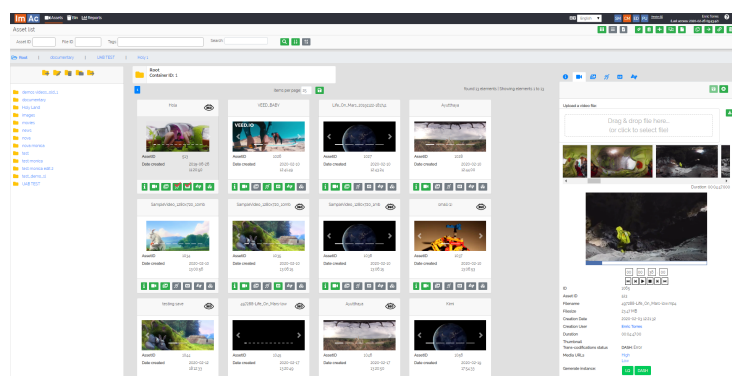
Back-end

- Automatic processes in the background such as LQ video import to a new asset, video transcoding or audio mixing.
- Interconnection with other systems and ImAc components such as publication and access service editors.

Tool main objectives

Management of access service production workflow and cataloguing:

- Assign the production of access service files to producers (usually an external service provider or professional).
- Send a Low Quality 360° video file and additional data to the producer so they can carry out the access service production.
- Receive the access service files from the producers and verifying that they are correct for broadcasting or publication
- Feedback to the producers when corrections are required.
- Catalogue the verified files for when they are required by the 360° programmes for broadcasting or publication.



Content Management interface

User interface used by the broadcaster to manage the production of access service files and their cataloguing:

- Grid or list view of Assets. An asset corresponds to a 360° video and contains all metadata and files related to the video.
- Folder tree for hierarchal cataloguing but also possibility to work only with metadata cataloguing.
- Asset card to manage the asset contents and assign file production tasks to subtitlers, audio describers or signers registered for specific tasks.
- Commonly used asset operations: sort, copy, move, link, create, remove, batch edit/create, import, etc.
- File view where access service files are listed according to the filter and used mostly for file verification purposes. QA department can change file status to Verified or Rejected.
- Direct access to ImAc online Editors for previewing or verification purposes.
- Bin to store unwanted assets with possibility to restore them later or delete them forever.
- Import and export access service files in main broadcasting formats.

Asset card

Every asset card includes five forms with the following contents:

- » **General info:** General metadata of asset.
- » **360° video:** Video upload/download area, video preview, video controls.
- » **Image gallery:** A gallery of images of different types.
- » **Subtitle:** List of subtitle files in different languages and related metadata. Possible to import/export in various formats. Also a place to assign the file to producers, view their work and communicate with them via feedback algorithm.
- » **Audio description:** Same as subtitle.
- » **Sign language:** Same as subtitle.

System Management interface

User interface used by broadcaster for administrative, configuration and maintenance issues:

- User management for controlled access and user data such as working languages in case the user is a producer.
- Profile management with various access levels for different purposes and specific tree branches.
- Management of different language locales for multi-language working.
- System settings such as system variables, notifications and enumerations.
- Queues and status of the processes that run in the background.
- System logs for troubleshooting purposes.

Editor interface

User interface for the access service producers:

- List of production tasks assigned to the logged-in producer.
- Colours to show the task status: *Pending* (grey), *In progress* (yellow), *Completed* (blue), *Verified* (green) and *Rejected* (red).
- Direct access from each task to the corresponding ImAc Web Editors for subtitles, audio description and sign language. The LQ 360° video and data from the broadcaster is delivered to the Editor for the production.
- Toggle button for changing task status to Completed and therefore notifying broadcaster for verification. Feedback algorithm to view and reply to feedback send by broadcaster.



Full Access Services



Totally cloud-based



Multi-language support



Immersive content



Full interconnection



Notification centre

Contact and URLs

Contact Anglatecnic for more information on ACM: info@anglatecnic.com

For documentation and a demonstration visit: <https://test.anglatecnic.net/acm/sm/demo.php>

For information of the ImAc project visit: <https://www.imac-project.eu/>