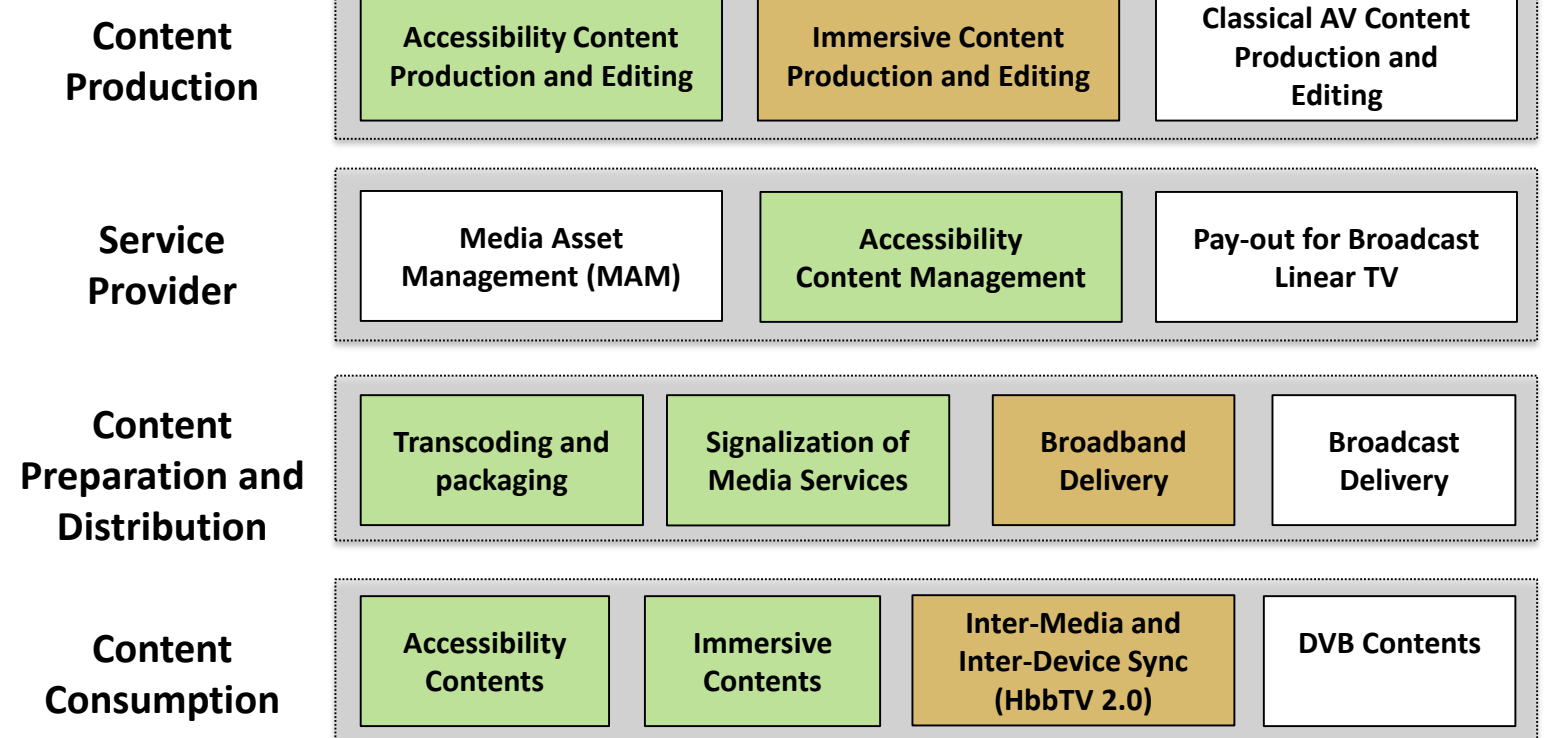




Disruptive Approaches for Subtitling Immersive Media

- Explore how accessibility services (such as subtitling) can be efficiently integrated with immersive media.
- Well-presented subtitles can contribute to a higher e-inclusion, but is complex
- Position, Guidance and Personalization are important.

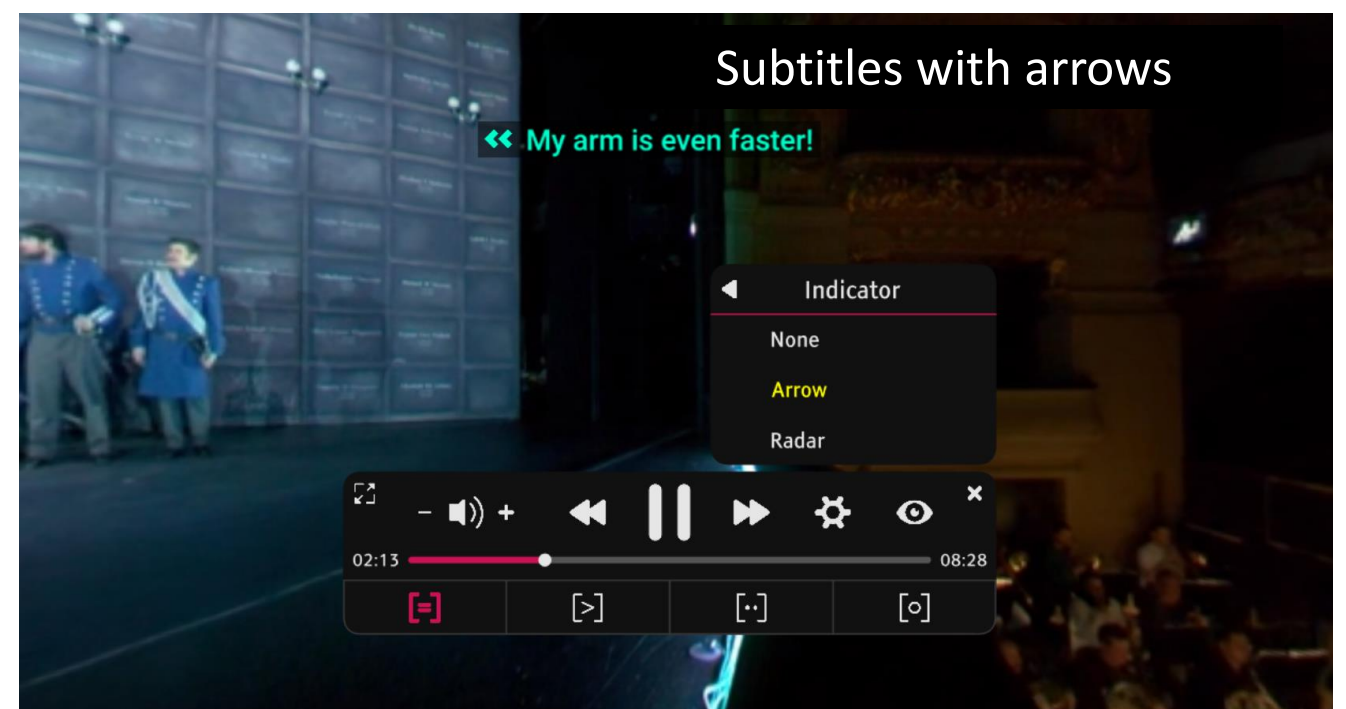


Subtitle Position

- Position and Guiding modes are provided in order to assist the users in finding the action and speakers within the 360° area

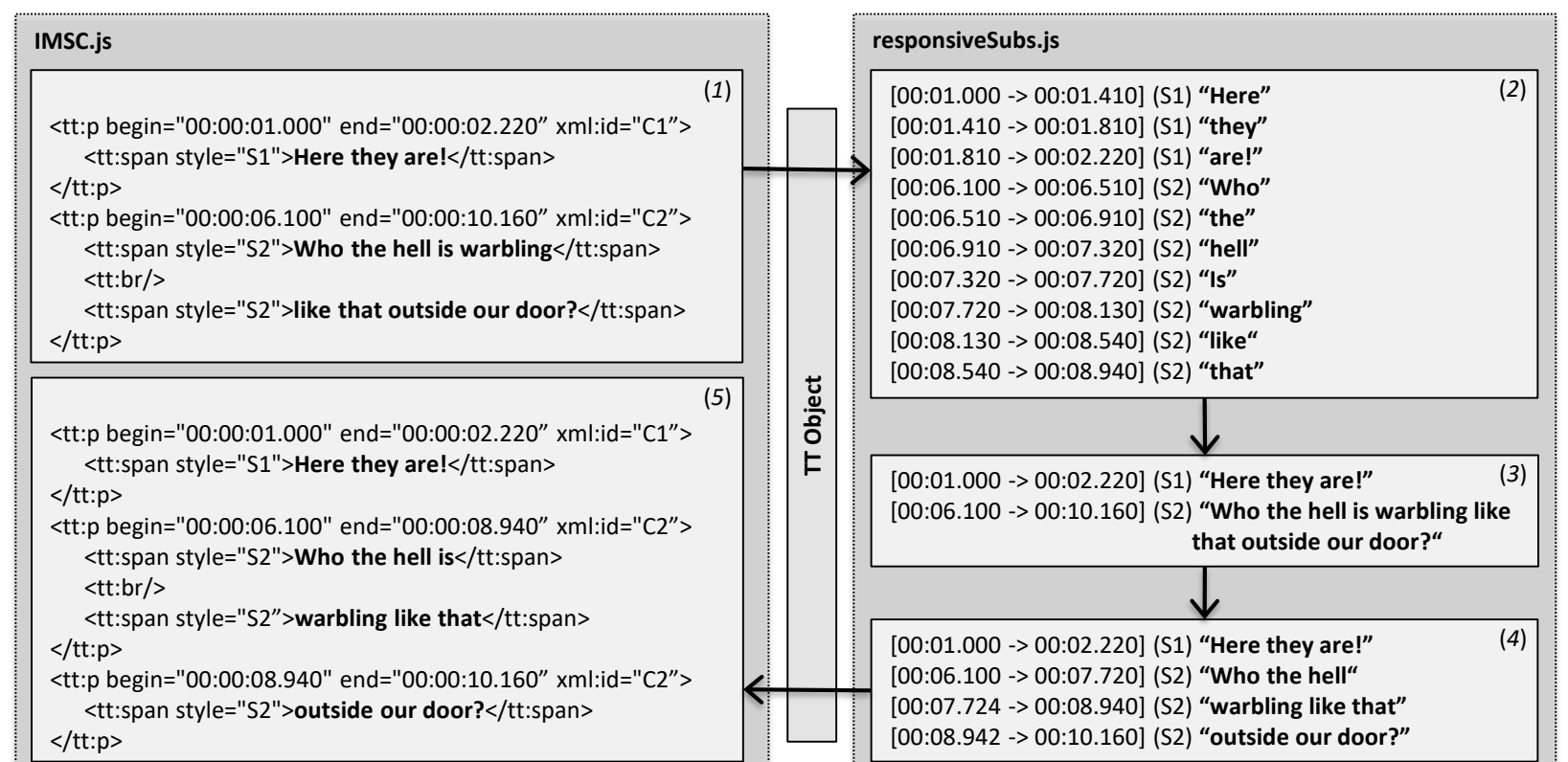
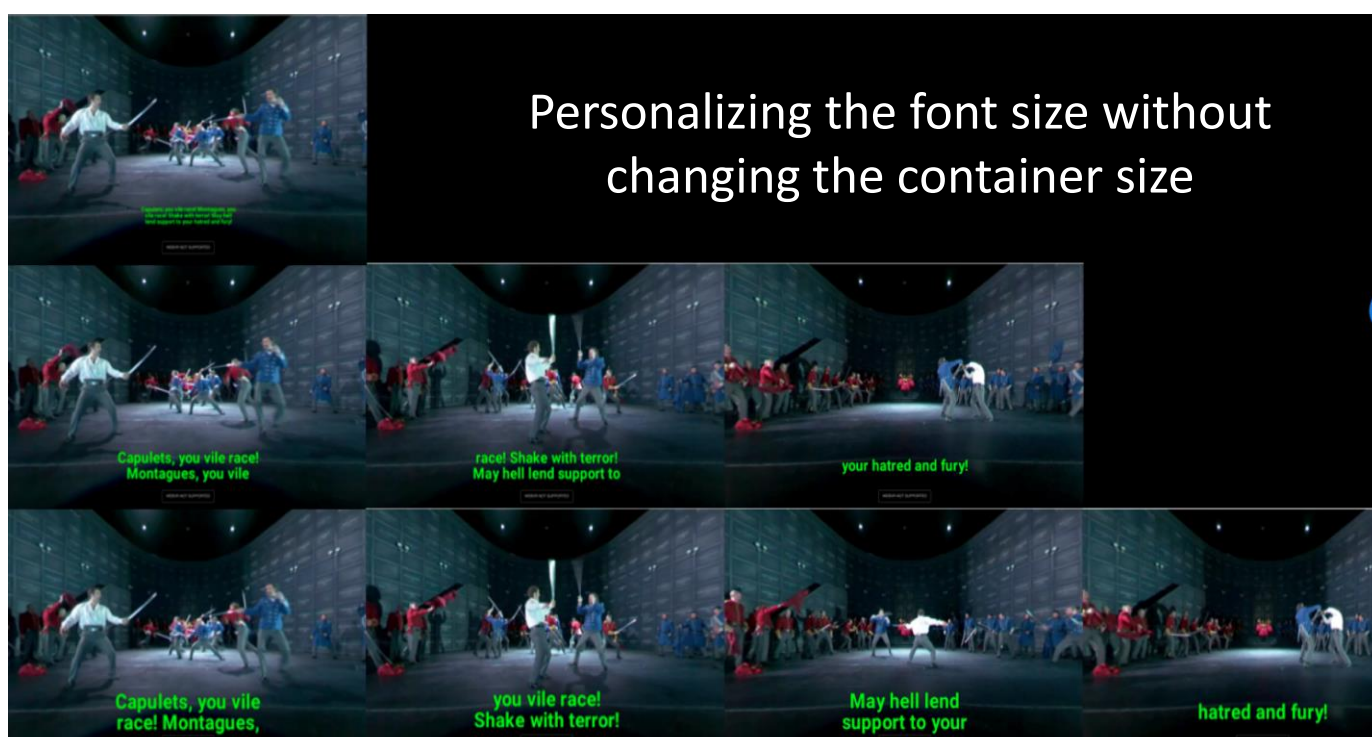
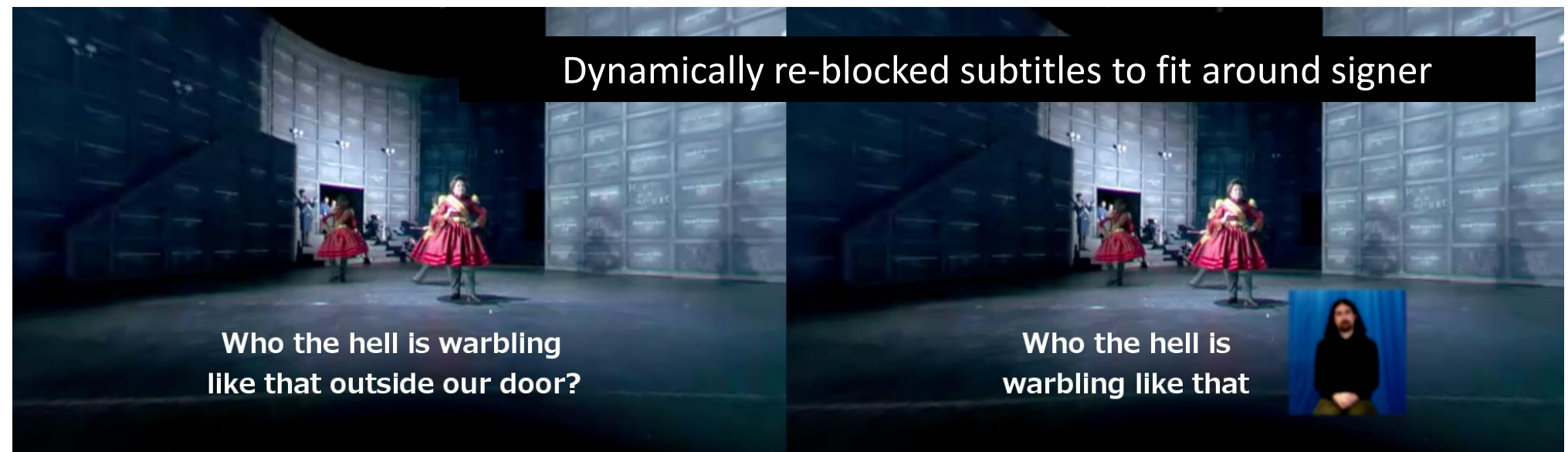


Subtitle Guidance



Responsive Subtitles

- Dynamically resizing to make space for other accessibility services such as a signer
- Font size and style can be personalized to meet the consumers needs
- Library integrated with IMSC.js



PARTNERS

